

# EMERGENCY PLANS

## EXPECT THE UNEXPECTED

Always plan ahead! Weather can change very quickly; vehicles break down; people get lost; first aid emergencies may happen at any time.



Make sure you know where you are going, what facilities and emergency services are available near by. know the emergency numbers for your area - 911 doesn't work in all areas of the province.

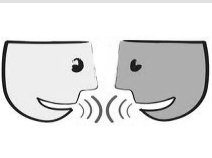
## BE PREPARED!

Resource road users must be prepared for emergencies. Generally, there are no hospitals, restaurants, telephone booths or cell coverage, gas stations, etc. Research and plan your trip before you leave.

Be sure to take the following:

- Two-way radio
- Cell or Satellite Phone or SPOT
- Map and compass or GPS w/ batteries
- Extra food and water and fuel
- Warm clothing
- First aid kit
- Matches (in water-proof container)
- Sleeping bags
- Flashlight
- Fire extinguisher
- Tool kit
- Shovel
- Winter tires and chains in the winter

## CHECK IN



Tell a dependable person where you are going and when to expect your return. Work with them to develop a plan they can put into action if you don't return home at the planned time.

If you are lost or stranded, stay with your vehicle; it will provide shelter until help arrives. Often, it is easier for rescuers to find a vehicle than an individual in the woods.

# RULES OF THE ROAD



Apply the same rules of the road as you use on highways:

- **Stay Alert!**
- **Observe and obey road signs.**
- **Drive safe speeds - never exceed 80km/hr. - less if conditions or signage calls for it.**
- **Obey the speed limit.**
- **Use caution - expect the unexpected.**
- **Drive on the right hand side of the road.**
- **Take your licence and insurance.**
- **Extinguish all flames and sparks - use an ashtray.**
- **Stop in the right spot.**
- **Drive to road conditions.**
- **Yield to industrial traffic.**
- **Drive with the lights on.**
- **Pack it out - don't litter.**
- **Wear your seatbelt.**
- **Focus on driving.**
- **Report forest fires.**
- **Don't drink and drive.**



# FURTHER INFORMATION

For more information please contact your local Ministry of Forests, Lands and Natural Resource Operations (MFLNRO) office.

- Wildfire Reporting:** 1-800-663-5555  
\*5555 on a cell
- BC Forest Safety Council:** 1-877-324-1212
- Crime Stoppers:** 1-800-222-8477
- Useful websites:**

[www.for.gov.bc.ca/for/](http://www.for.gov.bc.ca/for/)  
[www.for.gov.bc.ca/mof/regdis.htm](http://www.for.gov.bc.ca/mof/regdis.htm)  
[www.bcforestsafe.org/forestry\\_trucksafe.html](http://www.bcforestsafe.org/forestry_trucksafe.html)  
[www.drivebc.ca](http://www.drivebc.ca)

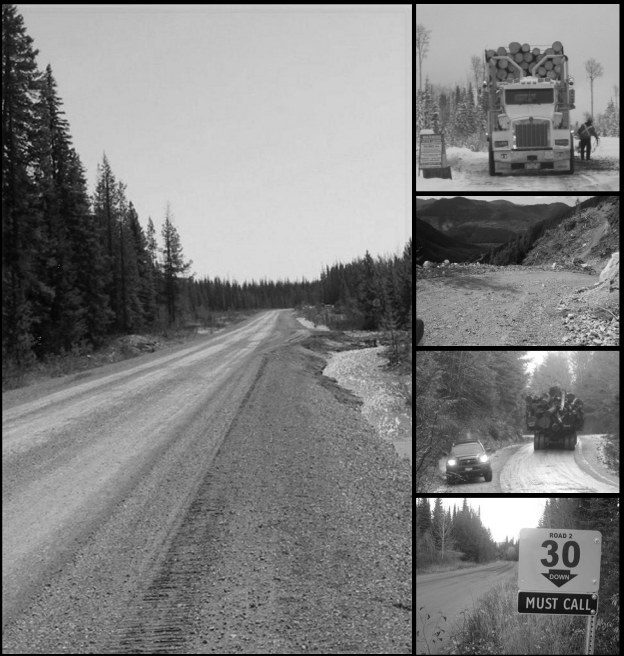


Ministry of  
Forests, Lands and  
Natural Resource Operations



**BC Forest Safety Council**  
*Unsafe is Unacceptable*  
[www.bcforestsafe.org](http://www.bcforestsafe.org)

# RESOURCE ROAD USER SAFETY GUIDE



*This brochure describes what you may expect on resource roads and describes general driving guidelines; follow them and contribute to the safety of all resource road users.*

Version 1.3 July, 2012



**BC Forest Safety Council**  
*Unsafe is Unacceptable*

# RESOURCE ROADS

Resource roads are constructed to develop (and protect) B.C.'s natural resources. They are used primarily by industrial vehicles engaged in forestry, mining, oil & gas or agriculture operations. Resource roads are not built the same as highways. Consequently, resource roads users must be aware of potential dangers.

## WHAT TO EXPECT

Most resource roads are built from gravel and are narrow (in some cases are only one lane wide). They may have encroaching roadside brush limiting your visibility, soft shoulders, and little to no ditch. Road grades may be much steeper than you encounter on highways.

These roads often have fewer signs to alert you to hazards, and might not have barriers at dangerous or steep road sections. Do not expect to see stop lights on resource roads.

Hazards you'll need to consider: excessive speed, high traffic volumes, excessive smoke, fog or dust, passing on narrow roads, freezing rain and snow, failure to follow traffic control procedures and wildlife.



## PULL OUTS

Most narrow resource roads have pull-outs built alongside the main driving surface. They may be located on either side of the road. It is OK use a pull-out on the wrong side if there is no other place available. Make sure you do not cut off any road users if you cross the centre to a pull-out. Use your two-way radio to advise the oncoming vehicle that you are "clear".

## VEHICLE AND LOAD SIZE

Industrial vehicles and the loads come in all shapes, sizes and speeds. Some industrial vehicles are **very** large, long and/or wide and you may need to clear out of the way. There might not be a pilot car ahead of large, long or wide vehicles.

Watch out for people on quads, motorcycles, snowmobiles, horses and bikes. ATV operation is allowed on some roads (e.g. industrial use), but be prepared for them around any corner or traveling the road edge.

# RESOURCE ROADS



## BRIDGES

Most resource road bridges are one lane. Make sure you yield to oncoming loaded traffic. It is better to pull over and let the other vehicle through - play it safe!

## ROAD DAMAGE

Resource roads might not be in use all seasons of the year; they may sustain damage due to frost, flooding, vandalism etc. Damage may not be marked. Roads may be overgrown or may not be plowed. The road might not be drivable - even though you found it on a map or GPS.

Expect rough surfaces, potholes, sinkholes, washouts, water bars and cross ditches.

## TWO WAY RADIO

Industrial traffic communicates using two way radios; this is how drivers talk to each other so they know to "clear" when a vehicle is heading towards them.

Best bet - If you have a 2-way radio, learn how to use it, ensure it is programmed with the channels you require to communicate in the areas you travel and take it with you.

## VANDALISM

Resource road signs are sometimes the target of vandalism. Such behavior is unacceptable; signs are in place to ensure the safety of all road users.

Please report vandalism, suspicious activity and perceived environmental damage to the company responsible for maintenance (posted at the start of the road), the MFLNRO or Crime Stoppers.

## FOLLOW THE "3 C'S"

**C**ourtesy

**C**ommon Sense

**C**oncentration



# DRIVING GUIDELINES

## OBSERVE AND OBEY SIGNS

Take time to read and understand signs at the start of a resource road, and along the way. They have important information about the road, traffic you can expect and active worksites or hazardous conditions - remember not all hazards are signed.

## STOP IN THE RIGHT SPOT

If you must stop along an active road, find a pull out, if there is none around find a straight section that provides good visibility from both directions, and is wide enough for other traffic to pass; pull over onto the shoulder.

Avoid stopping in a curve or on the crest of a hill.

## DRIVE TO ROAD CONDITIONS

When it's dusty or when roads are slippery, slow down so you can react to traffic, potholes, wildlife, changing road conditions and unexpected hazards.

Travel at a speed that allows you to stop within **half** of your range of sight (other vehicles need room to stop too).

## YIELD TO INDUSTRIAL TRAFFIC

Large industrial vehicles can't manoeuvre as quickly as passenger vehicles - give industrial users room so they can do their job, let them go ahead.

Follow industrial vehicles - watch them, slow down and pull over if they do.

## FOCUS ON DRIVING

- Keep your headlights and taillights on.
- Turn down or turn off the stereo.
- Keep off of your mobile phone.
- Wait until you get to your destination, or pull over, if you are going to eat.
- Exercise caution, patience and courtesy - Follow the 3 C's.

## SEATBELTS

Seatbelts save lives! Always wear your seatbelt.



# DRIVING GUIDELINES

## STAY ALERT

- Be prepared for unexpected conditions.
- Road conditions may change rapidly.
- Be prepared to stop quickly and safely.
- Dust means traffic.



## DRIVE SAFE SPEEDS

Always use caution and *expect the unexpected*.

- Some resource roads do not have posted speed limits; it's the **driver's responsibility** to travel speeds reflective of road conditions.
- If not otherwise posted, the maximum speed on a Resource Road in BC is 80 km/hr.
- When limits are posted, you must obey them; these limits are enforceable by the RCMP.
- Do not overtake industrial vehicles unless the driver pulls over and signals that it is safe to pass.
- You must be able to stop safely in any emergency or when encountering unforeseen obstructions.
- Take the time to plan your trip. Allow additional travel time so you will arrive on time or early to your destination.
- Avoid travelling resource roads in the dark.

## TWO WAY RADIO

The "road" channel is the radio channel used for communicating location, a hazard or emergency; on a resource road.

- The road channel should be posted at the start of the road, or at a road junction.
- Radios are pre-programmed. Know what roads or area you are travelling and ask your radio shop if the required channels are in your radio.
- If you don't have a 2-way radio, wait at the beginning of the road, for a vehicle that does. Follow that vehicle (lead vehicle). If the lead vehicle pulls over you should too.
- Don't try to keep up to the lead vehicle, drive the speed appropriate for the conditions, your knowledge and skill level.

## SMOKING, GARBAGE & WILDFIRES

- Don't start a forest fire - make sure you use an ash tray and thoroughly extinguish other flames or sparks.
- Keep trash inside your vehicle, look in the box of your pick-up to make sure there are no loose items that could fly out.
- Report Forest Fires!